

# ReMAP

Software for the Digital Enterprise

**ReMAP™** is a SaaS portfolio of solutions designed to transform a business into the Digital economy. It has three basic tenets – **BUILD**, **OPERATE** and **MEASURE**

**ReMAP BUILD** establishes a company's digital infrastructure with the setup of products and services, master data, campaigns and commerce online.

**ReMAP OPERATE**, covers all aspects Lead acquisition, Lead Management, Sales Presentation, Pricing and Selling and Fulfillment of Materials and Labor to complete projects. It addresses entire business operational workflows.

**ReMAP MEASURE** facilitates ongoing measurement of business performance through specific metrics and dashboards.

## PORTFOLIO

### Build

Master Data Management  
Digital Presence  
Product Catalog  
Campaign Management  
Product Advisor  
Visualizer/Designer  
Ecommerce Framework

### OPERATE

Lead Management  
Sales Management  
Pricing And Configurator  
Fulfillment Management  
Foreign Trade Management

### MEASURE

Operational Analytics  
Marketing Analytics  
Loyalty Management  
Customer Segmentation  
Predictive Modeling

## BENEFITS

DRIVE LEAD FLOW  
INCREASE CONVERSION  
GROW SALES  
FULFILL EFFICIENTLY  
ANALYZE BUSINESS

[www.remapweb.com](http://www.remapweb.com)

# ReMAP Loyalty Management™

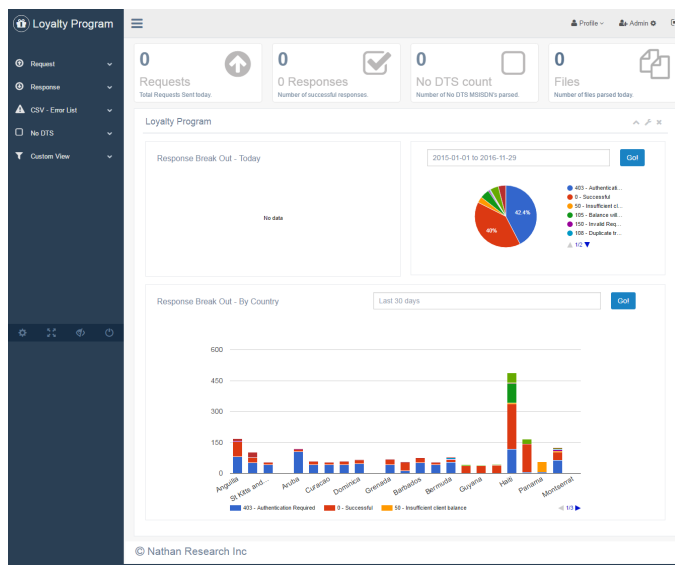
**ReMAP Loyalty Management™** – provides the ability to manage loyalty programs

## Features/Functions

- Organization of loyalty points for customers
- Periodic notification to customers on their loyalty levels and award redemption possibilities
- Mobile and tablet capable

## Value

Customer retention



from  
Nathan Research  
17110 Dallas Pkwy, Ste. 201  
214.452.8427  
[www.nathanresearch.com](http://www.nathanresearch.com)  
[info@nathanresearch.com](mailto:info@nathanresearch.com)